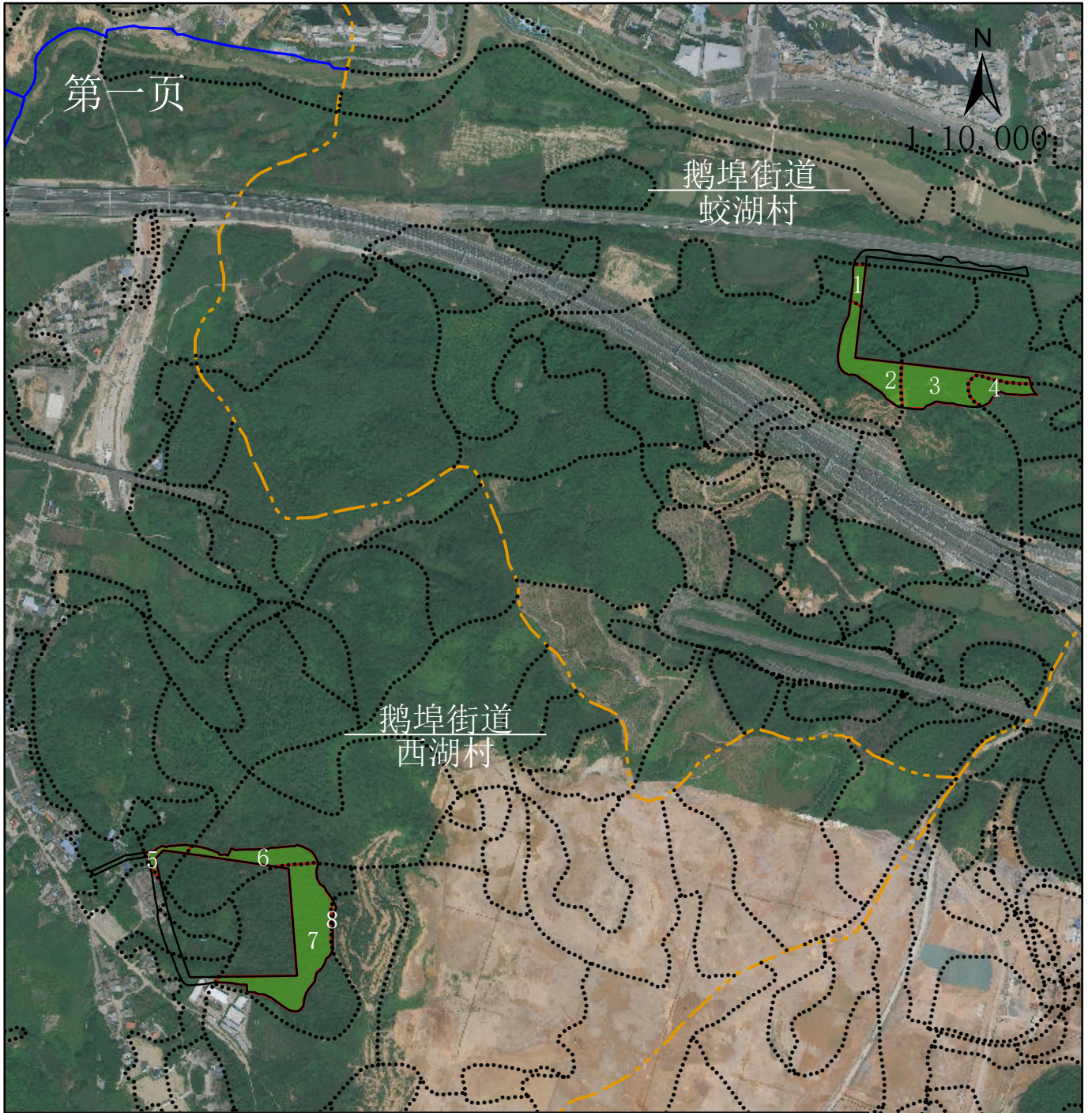
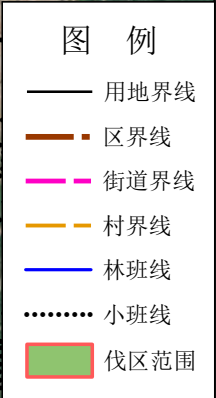


深汕生态环境科技产业园基础设施及配套项目一园区“七通一平” 一期场平工程（边坡）伐区位置基本图



| 地籍号 | 伐区号 | 伐区面积 (hm ²) | 林种 | 采伐树种 | 公顷蓄积 (m ³) | 蓄积 (m ³) | 规格材出材率 (%) | 规格材 (m ³) | 小规格材出材率 (%) | 小规格材 (m ³) | 经济材出材量 (m ³) | 采伐株数 (株) | 剩余物 (吨) |
|-----------------------|-----|-------------------------|-------------|-------|------------------------|----------------------|------------|-----------------------|-------------|------------------------|--------------------------|----------|---------|
| 441521005006000300501 | 1 | 0.1240 | 护路林 | / | 0.0 | 0 | 0.0 | 0.0 | 0.0 | 0.0 | 0.0 | 0 | 0.0 |
| 441521005006000300402 | 2 | 0.6984 | 护路林 | / | 0.0 | 0 | 0.0 | 0.0 | 0.0 | 0.0 | 0.0 | 0 | 0.0 |
| 441521005006000300602 | 3 | 0.8500 | 护路林 | / | 0.0 | 0 | 0.0 | 0.0 | 0.0 | 0.0 | 0.0 | 0 | 0.0 |
| 441521005006000300605 | 4 | 0.2967 | 护路林 | / | 0.0 | 0 | 0.0 | 0.0 | 0.0 | 0.0 | 0.0 | 0 | 0.0 |
| 441521005003000500705 | 5 | 0.1075 | 环境保护林 | 针阔混交林 | 44.6 | 5 | 57.3 | 2.8 | 16.0 | 0.8 | 3.6 | 91 | 0.8 |
| 441521005003000500801 | 6 | 0.4466 | 速生丰产用材林 | / | 0.0 | 0 | 0.0 | 0.0 | 0.0 | 0.0 | 0.0 | 0 | 0.0 |
| 441521005003000500908 | 7 | 1.5757 | 速生丰产用材林 | / | 0.0 | 0 | 0.0 | 0.0 | 0.0 | 0.0 | 0.0 | 0 | 0.0 |
| 441521005003000500902 | 8 | 0.0249 | 速生丰产用材林 | / | 0.0 | 0 | 0.0 | 0.0 | 0.0 | 0.0 | 0.0 | 0 | 0.0 |
| 441521005004000300402 | 9 | 0.3765 | 一般用材林 | / | 0.0 | 0 | 0.0 | 0.0 | 0.0 | 0.0 | 0.0 | 0 | 0.0 |
| 441521005004000300401 | 10 | 0.1403 | 速生丰产用材林 | / | 0.0 | 0 | 0.0 | 0.0 | 0.0 | 0.0 | 0.0 | 0 | 0.0 |
| 441521005004000300501 | 11 | 0.0088 | 一般用材林 | 针阔混交林 | 56.8 | 1 | 20.0 | 0.1 | 20.0 | 0.1 | 0.2 | 9 | 0.2 |
| 441521005004000300702 | 12 | 0.7933 | 环境保护林 | 针阔混交林 | 54.7 | 43 | 63.0 | 27.3 | 11.8 | 5.1 | 32.4 | 559 | 7.7 |
| 441521005004000300703 | 13 | 0.2320 | 环境保护林 | 桉树 | 47.9 | 11 | 32.4 | 3.6 | 36.0 | 4.0 | 7.6 | 372 | 2.5 |
| 441521005004000300701 | 14 | 0.0596 | 环境保护林 | 桉树 | 48.3 | 3 | 32.4 | 0.9 | 36.0 | 1.0 | 1.9 | 96 | 0.7 |
| 441521005004000300701 | 15 | 0.1128 | 环境保护林 | 桉树 | 0.0 | 0 | 0.0 | 0.0 | 0.0 | 0.0 | 0.0 | 18 | 0.5 |
| 441521005004000300704 | 16 | 0.0781 | 一般用材林 | 桉树 | 0.0 | 0 | 0.0 | 0.0 | 0.0 | 0.0 | 0.0 | 25 | 0.8 |
| 441521005004000300804 | 17 | 0.0755 | 一般用材林 | 桉树 | 0.0 | 0 | 0.0 | 0.0 | 0.0 | 0.0 | 0.0 | 22 | 0.7 |
| 441521005004000300801 | 18 | 0.1060 | 短轮伐期工业原料用材林 | 桉树 | 44.1 | 5 | 30.8 | 1.4 | 37.4 | 1.8 | 3.2 | 158 | 1.1 |
| 441521005004000300705 | 19 | 0.0010 | 一般用材林 | 桉树 | 0.0 | 0 | 20.9 | 0.0 | 45.6 | 0.0 | 0.0 | 2 | 0.1 |
| 441521005004000300900 | 20 | 0.8436 | 速生丰产用材林 | 针叶混交林 | 45.0 | 38 | 67.5 | 25.6 | 8.6 | 3.3 | 28.9 | 401 | 6.3 |
| 441521005004000301002 | 21 | 0.0323 | 速生丰产用材林 | 桉树 | 32.9 | 1 | 25.8 | 0.3 | 41.5 | 0.5 | 0.8 | 39 | 0.2 |
| 合计 | | 6.9836 | | | | 107 | | 62 | | 16.6 | 78.6 | 1792 | 21.6 |



深汕生态环境科技产业园基础设施及配套项目一园区“七通一平” 一期场平工程（边坡）伐区位置基本图

第二页

N
1:10,000

鹅埠街道
西南村

| 地籍号 | 伐区号 | 伐区面积 (hm ²) | 林种 | 采伐树种 | 公顷蓄积 (m ³) | 蓄积 (m ³) | 规格材出材率 (%) | 规格材 (m ³) | 小规格材出材率 (%) | 小规格材 (m ³) | 经济材出材量 (m ³) | 采伐株数 (株) | 剩余物 (吨) |
|-----------------------|-----|----------------------------|-------------|-------|---------------------------|-------------------------|---------------|--------------------------|----------------|---------------------------|-----------------------------|-------------|------------|
| 441521005006000300501 | 1 | 0.1240 | 护路林 | / | 0.0 | 0 | 0.0 | 0.0 | 0.0 | 0.0 | 0.0 | 0 | 0.0 |
| 441521005006000300402 | 2 | 0.6984 | 护路林 | / | 0.0 | 0 | 0.0 | 0.0 | 0.0 | 0.0 | 0.0 | 0 | 0.0 |
| 441521005006000300602 | 3 | 0.8500 | 护路林 | / | 0.0 | 0 | 0.0 | 0.0 | 0.0 | 0.0 | 0.0 | 0 | 0.0 |
| 441521005006000300605 | 4 | 0.2967 | 护路林 | / | 0.0 | 0 | 0.0 | 0.0 | 0.0 | 0.0 | 0.0 | 0 | 0.0 |
| 441521005003000500705 | 5 | 0.1075 | 环境保护林 | 针阔混交林 | 44.6 | 5 | 57.3 | 2.8 | 16.0 | 0.8 | 3.6 | 91 | 0.8 |
| 441521005003000500801 | 6 | 0.4466 | 速生丰产用材林 | / | 0.0 | 0 | 0.0 | 0.0 | 0.0 | 0.0 | 0.0 | 0 | 0.0 |
| 441521005003000500908 | 7 | 1.5757 | 速生丰产用材林 | / | 0.0 | 0 | 0.0 | 0.0 | 0.0 | 0.0 | 0.0 | 0 | 0.0 |
| 441521005003000500902 | 8 | 0.0249 | 速生丰产用材林 | / | 0.0 | 0 | 0.0 | 0.0 | 0.0 | 0.0 | 0.0 | 0 | 0.0 |
| 441521005004000300402 | 9 | 0.3765 | 一般用材林 | / | 0.0 | 0 | 0.0 | 0.0 | 0.0 | 0.0 | 0.0 | 0 | 0.0 |
| 441521005004000300401 | 10 | 0.1403 | 速生丰产用材林 | / | 0.0 | 0 | 0.0 | 0.0 | 0.0 | 0.0 | 0.0 | 0 | 0.0 |
| 441521005004000300501 | 11 | 0.0088 | 一般用材林 | 针阔混交林 | 56.8 | 1 | 20.0 | 0.1 | 20.0 | 0.1 | 0.2 | 9 | 0.2 |
| 441521005004000300702 | 12 | 0.7933 | 环境保护林 | 针阔混交林 | 54.7 | 43 | 63.0 | 27.3 | 11.8 | 5.1 | 32.4 | 559 | 7.7 |
| 441521005004000300703 | 13 | 0.2320 | 环境保护林 | 桉树 | 47.9 | 11 | 32.4 | 3.6 | 36.0 | 4.0 | 7.6 | 372 | 2.5 |
| 441521005004000300701 | 14 | 0.0596 | 环境保护林 | 桉树 | 48.3 | 3 | 32.4 | 0.9 | 36.0 | 1.0 | 1.9 | 96 | 0.7 |
| 441521005004000300701 | 15 | 0.1128 | 环境保护林 | 桉树 | 0.0 | 0 | 0.0 | 0.0 | 0.0 | 0.0 | 0.0 | 18 | 0.5 |
| 441521005004000300704 | 16 | 0.0781 | 一般用材林 | 桉树 | 0.0 | 0 | 0.0 | 0.0 | 0.0 | 0.0 | 0.0 | 25 | 0.8 |
| 441521005004000300804 | 17 | 0.0755 | 一般用材林 | 桉树 | 0.0 | 0 | 0.0 | 0.0 | 0.0 | 0.0 | 0.0 | 22 | 0.7 |
| 441521005004000300801 | 18 | 0.1060 | 短轮伐期工业原料用材林 | 桉树 | 44.1 | 5 | 30.8 | 1.4 | 37.4 | 1.8 | 3.2 | 158 | 1.1 |
| 441521005004000300705 | 19 | 0.0010 | 一般用材林 | 桉树 | 0.0 | 0 | 20.9 | 0.0 | 45.6 | 0.0 | 0.0 | 2 | 0.1 |
| 441521005004000300900 | 20 | 0.8436 | 速生丰产用材林 | 针叶混交林 | 45.0 | 38 | 67.5 | 25.6 | 8.6 | 3.3 | 28.9 | 401 | 6.3 |
| 441521005004000301002 | 21 | 0.0323 | 速生丰产用材林 | 桉树 | 32.9 | 1 | 25.8 | 0.3 | 41.5 | 0.5 | 0.8 | 39 | 0.2 |
| 合计 | | 6.9836 | | | | 107 | | 62 | | 16.6 | 78.6 | 1792 | 21.6 |

图例

- 用地界线
- 区界线
- 街道界线
- 村界线
- 林班线
- 小班线
- 伐区范围

审图号：GS(2025)1508号